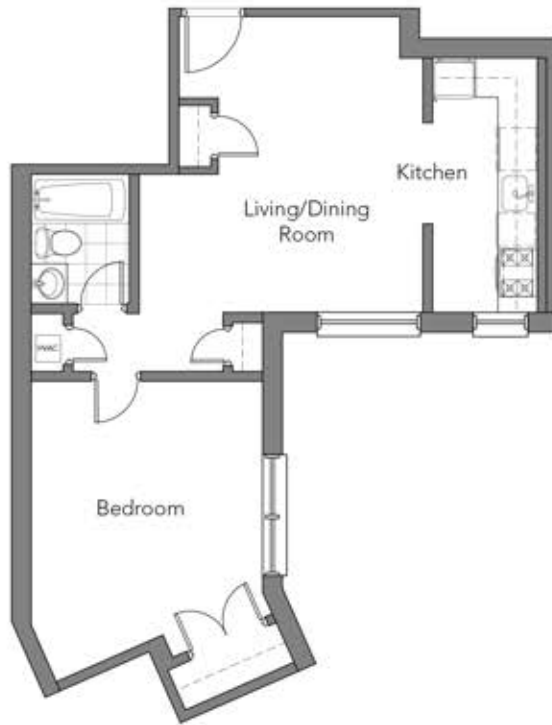


3501 13th STREET, NW

Washington, DC 20010

COLUMBIA HEIGHTS



Apartments 102, 103-503

1 Bed/1 Bath
550 square feet

- In home washer/dryer
- Individually controlled heating & cooling
- Incredible gourmet kitchen featuring Espresso finish cabinetry, granite counters, sleek stainless appliances, USB ports, LED lighting, and incredible style
- Enormous closets
- Stunning subway tiled bathroom with ultra-modern vanity
- Energy efficient double paned windows
- Timeless hardwood floors



Apartments 104-504

2 Bed/1 Bath
750 square feet

- In home washer/dryer
- Individually controlled heating & cooling
- Incredible gourmet kitchen featuring Espresso finish cabinetry, granite counters, sleek stainless appliances, USB ports, LED lighting, an expansive breakfast bar
- Enormous closets
- Stunning subway tiled bathroom with ultra-modern vanity
- Energy efficient double paned windows
- Timeless hardwood floors

Square footage is approximate, and may vary.

www.MonroeTower.com

3501 13th Street, NW
Washington, DC 20010
leasing@MonroeTower.com

202.813.1273 Main Office Press #3 for Leasing



U-I-P property
management, inc.

professional • courteous • reliable

