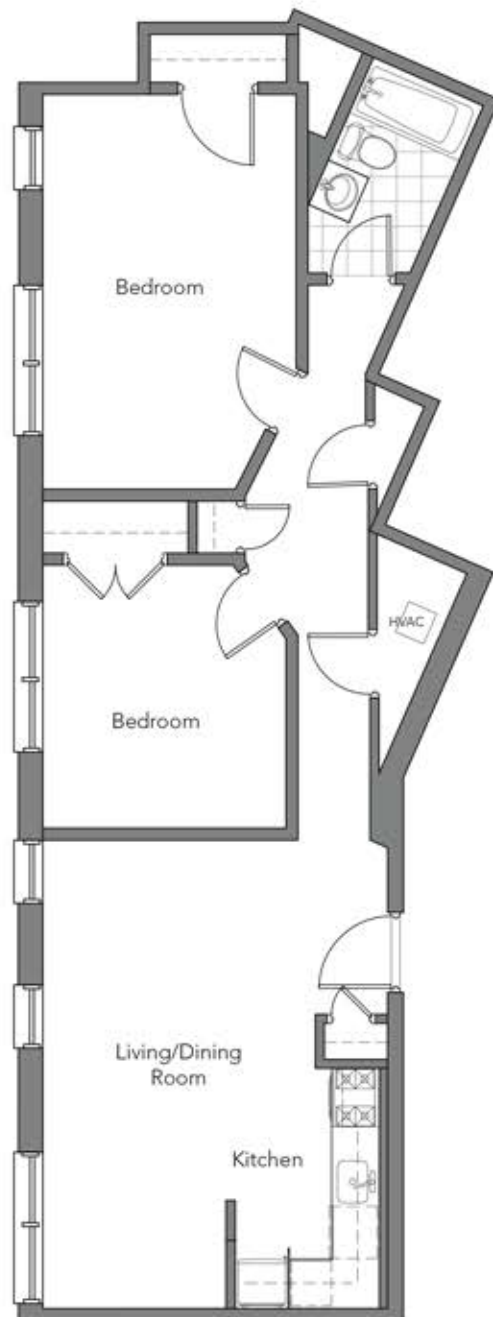


# 3501 15<sup>th</sup> STREET, NW

Washington, DC 20010

COLUMBIA HEIGHTS



## Apartments 107-507

**2 Bed/1 Bath**  
800 square feet

- In home washer/dryer
- Individually controlled heating & cooling
- Incredible gourmet kitchen featuring Espresso finish cabinetry, granite counters, sleek stainless appliances, USB ports, LED lighting, and incredible style
- Enormous closets
- Stunning subway tiled bathroom with ultra-modern vanity
- Energy efficient double paned windows
- Timeless hardwood floors

*Square footage is approximate, and may vary.*

[www.MonroeTower.com](http://www.MonroeTower.com)

3501 13<sup>th</sup> Street, NW  
Washington, DC 20010  
leasing@MonroeTower.com

555.555.5555 Main Office Press #3 for Leasing



**U-I-P** property  
management, inc.

professional • courteous • reliable

